

OVERLOCK FEATURES	686	683
Reference Cards	•	
Automatic Tension Release	•	
Built-in 2 Thread Converter	•	
Front Cover Safety System	•	
Differential Feed	•	•
Instant Rolled Hem Device	•	•
Adjustable Cutting Width	•	•
Self-threading Lower Looper	•	•
Color-coded Threading Routes	•	•
Built-in Storage Compartment	•	•
Adjustable Foot Pressure	•	•
Electronic Foot Control	•	•
Waste Tray	•	•
Foam Pads	•	•
Dust Cover	•	•
Optional Accessories	•	•
PROGRAMS		
Safety 4 Thread	•	•
Stretch Knit	•	•
Gathering 4	•	•
Stretch Wrapped	•	•
3 Thread Wide	•	•
3 Thread	•	•
Narrow Hem 3	•	•
Rolled Hem 3	•	•
Rolled Hem 2	•	
Overcast 2	•	
Flatlock 2	•	
Flatlock 3	•	•

Warranty and Service

Elna's superior reputation was established in 1940 with the production of its first sewing machine. Ever since, Elna has continued to be a leading brand of home sewing and related equipment especially designed with the innovative sewer in mind. Thousands of professionals worldwide provide expert service. Millions of people have chosen Elna for its quality, performance and reliability.



elna
SWISS DESIGN

E l n a

6
8
3
/
6
8
6

Your talents reach
new heights



elna
SWISS DESIGN

Aim high...

with Elna

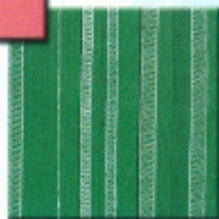
Be confident that your high goals will be reached with the Elna 686/683 overlock. You'll appreciate its performance - efficient and professional.

Both machines offer a choice of sewing with either 3 or 4 threads. With its built-in 2 thread converter, the 686 has 2 thread capability, allowing you to go one step further. Both machines offer an instant rolled hem device - easy to use, never change the needle plate again. Both machines offer differential feed, a must for the wide variety of fabrics available.

Experience the exhilaration of owning an Elna 686/683 overlock.



Pearl Application -
2 mm and 4 mm
Deco Ladder



3 Thread Wide
3 Thread



Elastic Application



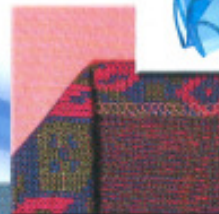
Deco Braids



Stretch Knit



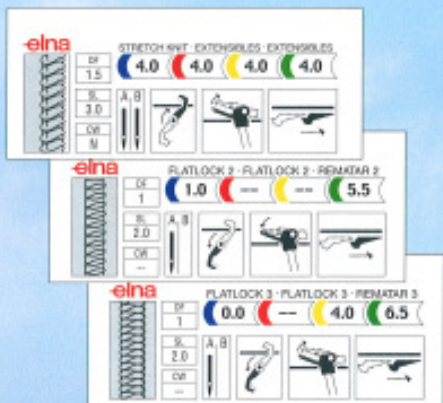
Deco Flatlock 2
Deco Flatlock 3



Blind Hem



Roller Hem 2&3
Narrow Hem



Reference Cards (686 only)

Unsure of how to set up the machine? Look to the reference cards for answers. You'll find settings for differential feed, stitch length, cutting width, etc. everything you need.



Lower Looper Threading



Easy threading, color-coded threading routes and a self-threading lower looper - the 686/683 has it all.

Safety 4 Thread



3 Thread Wide
Stretch Wrapped



Edge Finishes

