

elna
SWISS DESIGN

eXcellence 780



Unlimited possibilities

THE PERFECT BLEND OF HIGH PERFORMANCE AND EASE-OF-USE

Our **eXcellence 780** is a computerized sewing machine offering outstanding quality and an astonishing number of high-level features. Countless functions and intuitive operation simplify the sewing process helping you save time and increasing your efficiency.

Experience unique sewing comfort

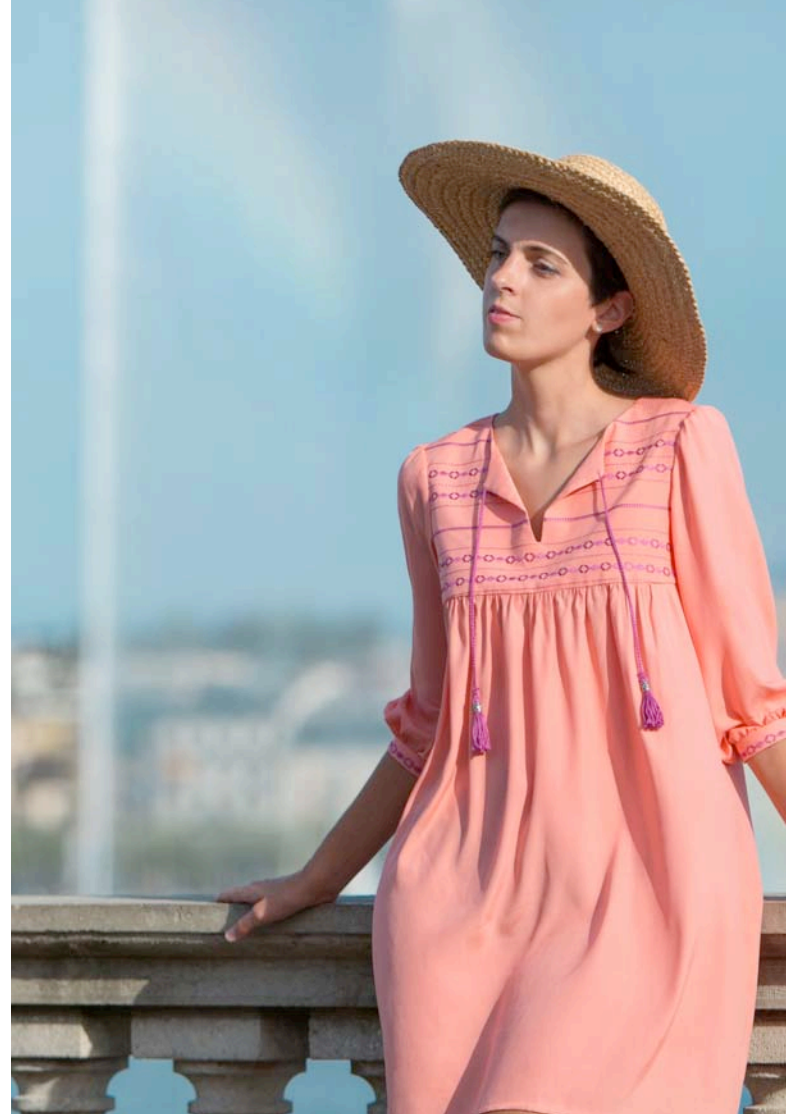
The **elna eXcellence 780** features a new ergonomic design, which creates an extremely generous sewing space and an optimal environment for working on large sewing, quilting or home decorating projects. Bright LED lighting and a wide LCD touchscreen contribute to additional comfort and make your sewing experience a pleasant and effortless one.

A powerful and reliable companion

With its broad range of superior functionalities, high sewing speed and a choice of over 350 stitches, the **elna eXcellence 780** will provide you with impressive sewing performance, along with 3MB storage capacity. While this model is built to stand up to hours of sewing with the same stitch quality, its full metal frame ensures total stability.

The ultimate quilting machine

This exclusive combination of features is an invaluable asset to support quilting and patchwork enthusiasts on ambitious projects.



Unlimited possibilities for your creativity!

The elna eXcellence 780 is smooth, versatile and comprehensive.

Fabric capability: The **eXcellence 780** is the ideal machine for sewing smoothly a wide range of fabrics, from delicate to heavy, and for getting excellent penetration on all sorts of textiles.

Perfect results: Three different needle plates are included as standard accessories and ensure regular and highly precise stitches whatever the fabric. Thanks to our one-step converter system, you can easily change and use the right plate in order to lend a professional and qualitative finish to all your sewing projects.

Creative focus: The **elna eXcellence 780** offers extensive functions to express your creativity. The stitch tapering option allows for a unique decorative effect and fabulous possibilities for creation with free motion quilting, thread painting or raw edge appliqué. With the Stitch Composer software you will enjoy creating your own stitches.



TECHNICAL FEATURES



RETRACTABLE FRONT LIGHT

provides direct light to the needle area and creates a shadow-free work space. In addition, ten bright lights in five locations illuminate the sewing bed.

6 EASILY ACCESSIBLE FUNCTION BUTTONS

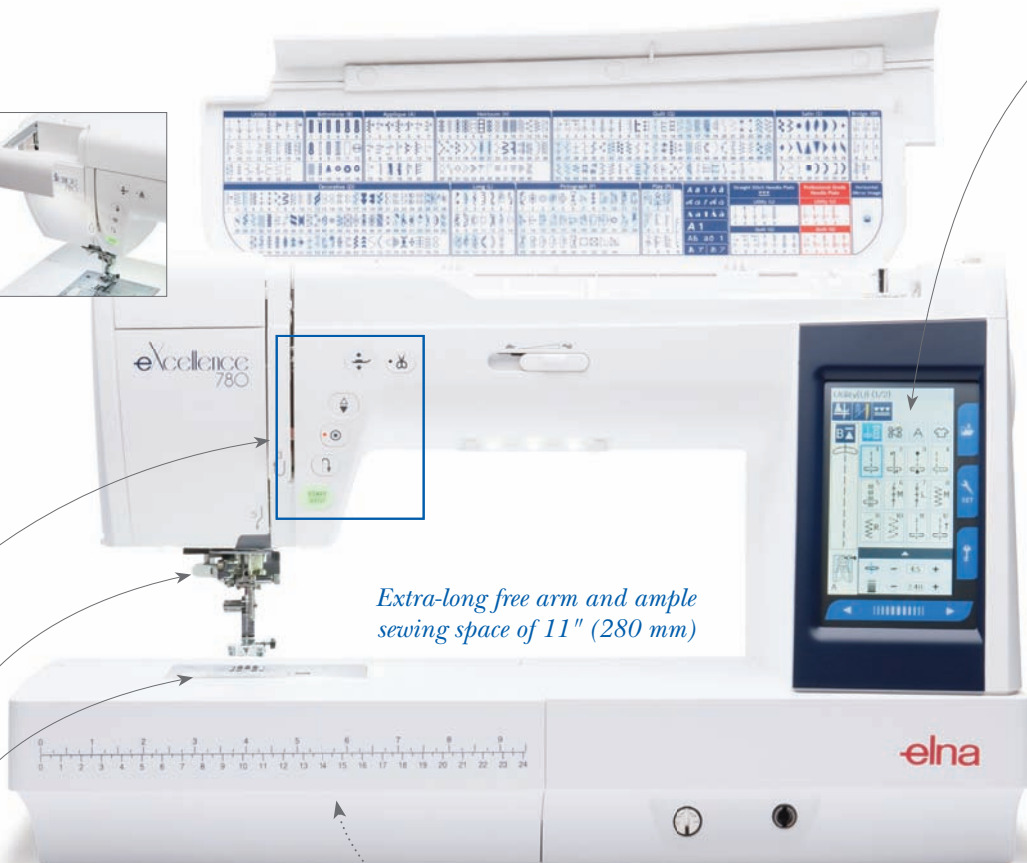
including automatic presser foot control and automatic thread cutter.

BUILT-IN NEEDLE THREADER

EASY AND GUIDED BOBBIN THREADER WITH BUILT-IN THREAD CUTTER



Extra-long free arm and ample sewing space of 11" (280 mm)



ONE-STEP NEEDLE PLATE CONVERTER

BUILT-IN COMPUTER WITH ADVANCED LCD TOUCHSCREEN

The wide and full-color LCD touchscreen shows all the functions to simplify the use of the built-in computer. It is intuitive for simple navigation: the Sewing Application guides you through the various steps and supports you in a variety of tasks, while facilitating selection and combination of stitches. The integrated 3MB memory enables you to memorize favorite stitches or new combinations.



STITCH COMPOSER AND USB PORT

The Stitch Composer software is included with the eXcellence 780 and enables you to create original stitches or to modify existent ones. You can then easily save them or transfer them to the machine by using the built-in USB port.

ACCESSORIES

The elna eXcellence 780 comes with an extensive and comprehensive range of standard accessories.

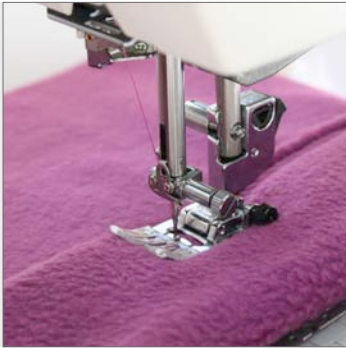
Optional ones can be ordered separately.



Standard foot, satin stitch foot, open toe satin stitch foot, rolled hem foot, zipper foot, blind hem foot, 1/4" seam foot, overlock foot, button sewing foot, darning foot, free motion quilting closed-toe foot, free motion quilting open-toe foot, free motion quilting zigzag foot, automatic buttonhole foot with stabilizer plate, professional HP 1/4" seam foot with needle plate, straight stitch needle plate, upper feed device, circular pivot pin, button shank plate, extra-large foot controller and thread cutter switch, extra wide table, knee lifter, cloth guide and many more.

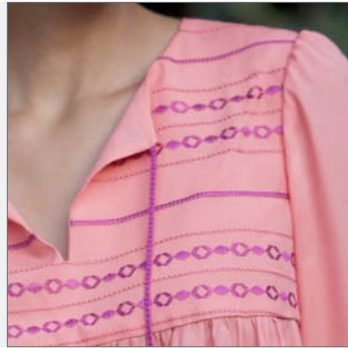
SEWING

The elna eXcellence 780 offers great functions for creative minds!



AUTOMATIC FOOT PRESSURE

A fabric sensor automatically detects the thickness of the fabric you are using and adjusts the foot pressure increasing seam accuracy.



9MM STITCH WIDTH

Add more impact to your creations with stitches and monogrammes of 9 mm width. An ideal feature for making your decorative stitches bolder, brighter and distinctive.



VARIABLE ZIGZAG / TAPERING

With this advanced feature you can gradually enlarge or reduce the stitch width without stopping the machine by using the knee lifter.



AUTOMATIC ONE-STEP BUTTONHOLE SYSTEM

Accurate buttonholes without any effort and in no time. Both sides of the bed-line are sewn in the same direction for a highly precise result.

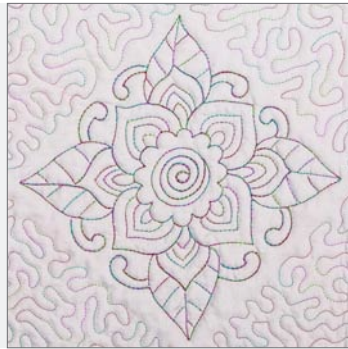
PATCHWORK AND QUILTING

*Many original features of the eXcellence 780
will be appreciated by quilters!*



UPPER FEED SYSTEM

The upper feed device guides your fabric from top to bottom with amazing precision and keeps multiple layers from shifting for perfect matching of stripes and checks.



FREE MOTION QUILTING

Four specific feet make free hand quilting easier. The foot height can be customized for your project or preference.



PROFESSIONAL HP FOOT AND NEEDLE PLATE

The new professional HP $\frac{1}{4}$ seam foot and professional grade needle plate enable to sew accurate curves and great straight stitches on any kind of fabrics.



MEMORIZED QUILTING SEAMING

The machine remembers the length of your seam, so you can stitch a large number of blocks in the same size.

eXcellence 780

TECHINCAL FEATURES

Broad sewing space of 11" (280 mm)

Top cover with stitch chart

Full-color and high-definition LCD touch screen

Integrated upper feed system

Horizontal full rotary hook with transparent bobbin cover

One/step needle plate conversion

Auto declutch bobbin winder with integrated thread cutters

Built-in superior needle threader

Automatic thread tension control

Automatic presser foot lift

Automatic foot pressure adjustment

Upper thread and bobbin thread sensors

Extra-long free arm

7 pieces retractable feed dog

Multi-language interface (13 languages)

10 built-in white LED lamps in 5 different locations, including one retractable front light

3MB built-in memory and one USB port

SEWING FEATURES

350 stitches, incl. 11 buttonholes

3 typefaces + Cyrillic and Japanese alphabets

Capital letters and numbers available in 9 mm length

Variable zigzag / tapering

Feet for free-motion quilting

100 design stitch combinations possible

Stitch Composer software

Maximum stitch width: 9 mm

Maximum stitch length: 5 mm

Maximum sewing speed: 1'060 spm

91 needle positions with 0,1 mm increments

EASY-ACCESS FUNCTION BUTTONS

Start / Stop function, reverse, auto-lock (knot), up/down needle position, presser foot lift, thread cutter.

5-YEAR WARRANTY AND SERVICE: elna's reputation for innovation was established in 1940 with the production of its first groundbreaking sewing machine. Ever since, **elna** is a leading brand in the home sewing industry. Today, thousands of professionals worldwide provide expert service and advice, and a 5-year warranty is included in the purchase price of all **elna** appliances. Millions of people have chosen **elna** for its quality, performance and reliability.